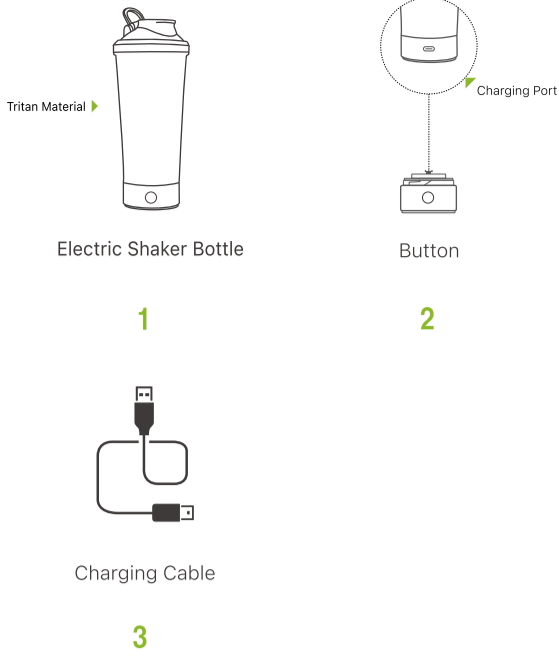
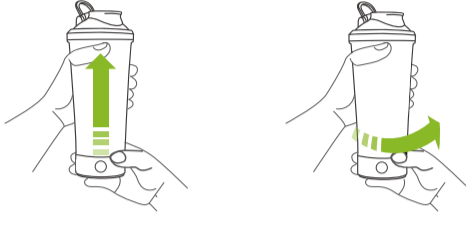


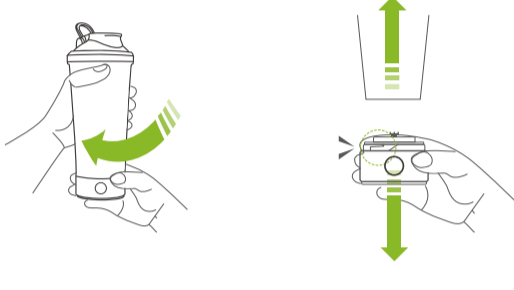
## ● IN THE BOX



## ● BASE INSTALLATION



## ● REMOVAL METHODS



## ● BUTTON OPERATIONS



**CLICK**  
30 SEC MIXING

**DOUBLE CLICK**  
3 MIN MIXING

**LONG PRESS FOR 2 SEC**  
DISPLAY BATTERY

**CLICK DURINA MIXING**  
STOP



vertical view

After unpacking, please make sure to fully charge the product before use. When charging, LED light of the base is on to show current battery level. After the battery is fully charged, all LED lights will be off.

## ● THREE EASY STEPS!

**Add liquid:** Pour the liquid you choose into the bottle. Ideal filling volume is 250-550ml (9-18oz)

**Start electric shaker bottle:** Press the button to start shaker bottle. Please do not add protein powder and supplement before activating electric shaker bottle.

**Add protein powder or supplement:** Pour liquid or powder supplement into the rotating vortex (60 mg at most). Do not pour supplement inside before starting the shaker bottle.

Tighten the lid, and enjoy your drink.

## ● IMPORTANT NOTES

### Usage Safety

**1** To avoid damage and injury, please never pour water above 160 degrees Fahrenheit into the bottle. Too high temperature will cause pressure accumulation during operation, and may break the sealing, to gush from the top.

**2** Please never heat the bottle in high temperature environment such as microwave oven and sterilization cabinet. Please never freeze this product.

**3** Do not add dry ice, carbonated beverage and other liquids prone to generate high pressure. Do not add strong acid or alkali so as to prevent inner wall of container from corrosion.

**4** Do not store dairy product or baby food in the bottle for a long time.

**5** Do not entirely soak the base in liquid for a long time to avoid failures

### Battery and Charging

**1** Battery life mainly depends on your usage frequency. The statement of charge once for 1 month is calculated based on using 3 times a week under 30 sec mixing mode. Battery performance will gradually decline with the time of use.

**2** When charging, LED indicator light will flash at current battery level, and all indicator lights are off after full charging.

**3** At the end of mixing, if LED indicator lights turn off one after another, and the last LED light flashes quickly for 3 times, it means the battery should be charged.

## ● TROUBLESHOOTING

- Unable to start mixing, one LED flashes for 3 times
- No battery, please charge

- Mixing power is weak or mixing stops suddenly, and all LEDs flash for 3 times
- Low battery
- Excessive protein powder
- Improper base installation

- The base and bottle cannot be assembled
- Foreign matter in the notch Incorrect notch position